

DIGITAL ROOM THERMOSTAT

dizaynkombi.com

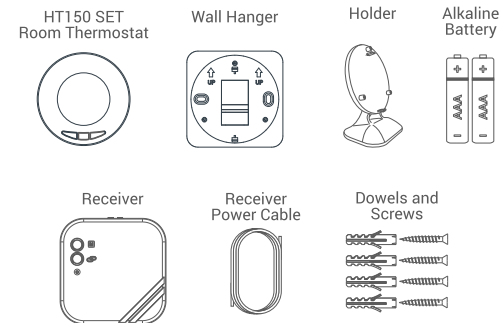
HT150 SET USER MANUAL

GENERAL SPECIFICATIONS

HT150 SET is a wireless room thermostat. The user can adjust the room thermostat with the required temperature and get more comfortable and economic heating.

- Precise Temperature Measurement
- Heating calibration
- ON/OFF Control
- Wireless Connection

HT150 SET AND EQUIPMENTS



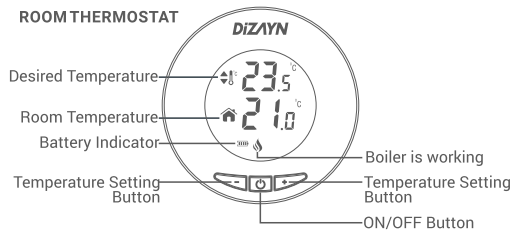
TECHNICAL DATA

Room Thermostat

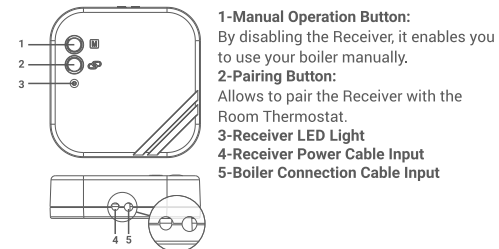
Dimensions	80mm / 80mm / 26mm
Operating Current	3V DC (2 x AAA alkaline battery)
Temperature Measurement Accuracy	0.1°C
Operating Sensitivity	0.5°C
Operating Temperature Range	(5°C) – (30°C)
Battery Life	1 Year (2 x AAA)
Operating Temperature	(-10°C) – (+50°C)
Storage Temperature	(-20°C) – (+60°C)

Receiver

Dimensions	90mm / 90mm / 25mm
Operating Current	230V AC
Relay NO Switching Current	7A (240VAC – Resistive load) 10A (120VAC – Resistive load)
Storage Temperature	(-20°C) – (+60°C)



RECEIVER

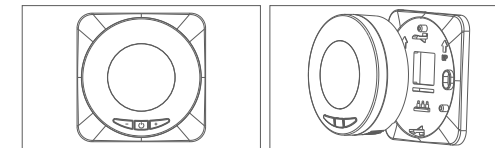
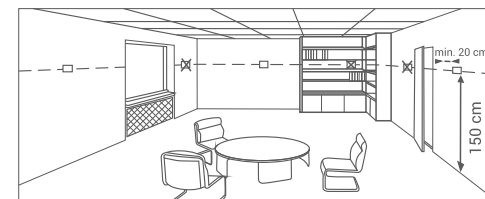


RECEIVER LED DESCRIPTIONS

Steady Red	Receiver has power but Receiver and Room Thermostat are not paired.
Blinking Green	Waiting for pairing signal from Room Thermostat.
Steady Green	Receiver and Room Thermostat are paired. Boiler is not operating.
3 Short Orange Blinking	Operate the boiler signal has reached to the Receiver.
Steady Orange	Boiler is operating.
3 Short Green Blinking	Shut the boiler down signal has reached to the Receiver.
Blinking Orange	Boiler is operating in manual mode.
Blinking Red	Receiver did not get a signal from the Room Thermostat for 22 minutes or longer and boiler has shut down.

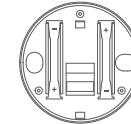
ROOM THERMOSTAT PLACEMENT

Room Thermostat needs to be placed in the room which is used most frequently. For instance; living room or lounge. Placing the Room Thermostat in a spot that have air circulation like entrance of a room or side of window should be avoided. Also anywhere close to heating units such as radiator, stove and spots which get direct sun lights would not be suitable. Room Thermostat needs to be located above the floor 150 cm height. Few trials may be made to find the most convenient spot.



BATTERY PLACEMENT

Remove your room thermostat from Wall hanger. Then remove the battery housing from the back side of thermostat. Install 2 alkaline batteries to battery housing. Please be sure the directions of batteries. Hang your thermostat on the Wall hanger after assemble battery housing back. Change the both batteries together.

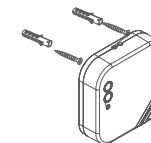


Low Battery Warning: When the “Lb” icon appears on the screen, it means “low battery warning”. It is recommended to replace the batteries when this warning appears.

Warning: When the product is not used for a long period (more than 15 days), remove the batteries. Otherwise, malfunctions that may occur would be out of warranty.

Please throw your dead batteries into the waste bin for batteries.

RECEIVER PLACEMENT



The important things to note for the Receiver placement is avoiding physical contact between the Receiver and boiler, and protecting it against materials such as liquid, dust etc.

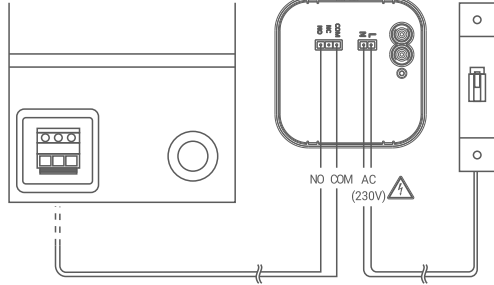
The devices should be placed in order to minimize the damage to the received and transmitted signals by paying attention to the following points;

- The devices should not be mounted on metal surfaces.
- The devices should not be installed close to electrical cables and electronic equipment such as computers and television units.
- The devices should not be installed near large metal structures or other building materials using fine metal meshes such as special glass or special concrete.
- Distance between the Room Thermostat and the Receiver should not exceed 20 meters or 2 floors.
- Receiver must be installed at least 50 cm away from the boiler.

RECEIVER SETUP

- First, shut down your boiler and your boiler's power source with all electrical current (fuse, socket etc.)
- As shown in the connection diagram, connect one end of the boiler connection cable to the COM and the other to the NO input of the Receiver.
- Connect the other ends of the cable -which you connected to the Receiver- to room thermostat connection terminal as shown in your boiler's user manual.
- You must first connect the Receiver power cable to the Receiver and then to the fuse to which the boiler is connected.
- After completing the cable connection process, firstly turn on your fuse and then your boiler.
- By pressing the Receiver's manual usage button for 2 seconds, you should see the Orange Light blinking on the Receiver. In this way, after making sure that the boiler is operating, press the same button again for 2 seconds and see that the Orange LED turns off.
- Set up the Room Thermostat to pair the Receiver with the Room Thermostat.

RECEIVER WIRING DIAGRAM



Warning!

Only persons who have got Professional Competence should make operations electric wiring or boiler setup.

PAIRING THE ROOM THERMOSTAT AND THE RECEIVER

- If you press the "On / Off" button for 3 seconds, when your Room Thermostat is turned off, the temperature calibration setting menu will appear on the screen, and when it is pressed again, a synchronization menu with "Adr" symbol will appear.
- Keep pressing the receiver's pairing button for 2 seconds and see that the LED on the receiver is blinking green.
- Press the "+" or "-" button of your Room Thermostat while the LED is flashing green.
- If the pairing is successful, the green flashing LED on the receiver will be constant.
- Receiver and Room Thermostat have now been synced.

ROOM THERMOSTAT HEATING CALIBRATION

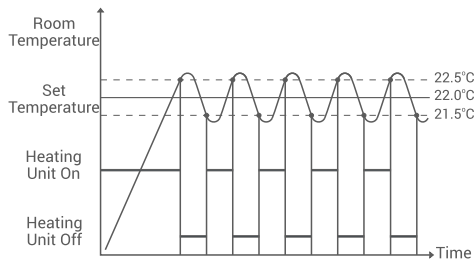
Temperature sensors which are used for Room Thermostats, are very sensitive. You may need to calibrate your Room Thermostat if you would like to get the same temperature degrees with other thermometers in your living space.

- Press the on-off button for 3 seconds when the device is off.
- In order to see the desired temperature, set the temperature difference by press the "+" or "-" buttons. This value can be set between "-8°C" and "+8°C".
- To exit calibration menu please pressing the button 2 times.

Note: Recommended temperature calibration is "0.0°C".

ROOM THERMOSTAT WORKING LOGIC

Your Room Thermostat will start working from the moment you insert the batteries Your Room Thermostat measures the temperature of its environment every 5 seconds. If the ambient temperature rises 0.5 degrees above the temperature you have set, your Room Thermostat will send a command to the Receiver and turn off the boiler, if it falls below 0.5 degrees, it turns on the boiler. Thus, it ensures that the ambient temperature remains within a certain range.



④

Your Room Thermostat sends the last status signal to the Receiver every 10 minutes. Thus, your Room Thermostat and Receiver work synchronously. If the signal cannot reach to the Receiver from the Room Thermostat for 22 minutes, it perceives that the connection is broken and stops the boiler operation for safety reasons. Likewise, in cases where the electricity comes back after a power failure, the Receiver do not operate the boiler until 'operate' signal reaches from the Room Thermostat. However, in this case, if the Room Thermostat continues to operate normally, it will continue to work properly without any need for intervention since it sends a status signal to the Receiver every 10 minutes.

FREQUENTLY ASKED QUESTIONS

- Is my Room Thermostat compatible with my boiler?
If your boiler has on-off connections, your Room Thermostat is compatible. You can learn the information about your boiler from the boiler user manual or your boiler service.
- How will I connect my boiler with my Receiver?
We recommend that the connection between your Receiver and your boiler should be made by professionally qualified persons.

2x0.75 mm cable is sufficient for the Receiver - boiler connection. Connect one end of the cable pair to the room thermostat connection terminals stated in the user manual of your boiler.

Connect the other end of the cable pair to COM and NO inputs of the terminal inside the Receiver as shown in the "RECEIVER WIRING DIAGRAM" section.

The direction of the cable ends does not matter.

DECLARATION OF CONFORMITY

ISIPARK İÇ VE DIŞ TİC. İNŞ. İSİTMA SİSTEMLERİ ÖTÖ. SAN.A.Ş. which Head Office and production site is located on Fatih Mah. 1188 Sk.No:13/A Sarnıç - Gaziemir - İZMİR – TÜRKİYE confirms and declares that the product marked with CE and its specifications below is covered by the provisions of the mentioned directive.

Brand : Dizayn
Product Name : HT150 SET
Product Type : Digital Room Thermostat
Compatible Directives:

Radio and Telecommunications Terminal Equipment Regulation 2014/53/EU (R&TTE/RED EN 301 489-1 V2.1.1:2017, EN 300 220-1 V3.1.1:2017, EN 301 489-3 V2.1.1:2017, EN 300 220-2 V3.1.1:2017, EN 62479:2010)
Electromagnetic Compatibility Regulation 2014/30/EU (EMC EN 61 000-6-3:2007 + A1 :2011, EN 61000-6-1:2007)
Low Voltage Directive 2014/35/EU (LVD EN 60730-2-9:2010, EN 60730-1:2011)

Additional Information: The mentioned product can be used with boilers with on / off output and compliance with the directives only covers the product. ISIPARK is not responsible for the entire system's compliance with the directives. This statement is not valid if changes are made to the product without our approval.



WARRANTY CONDITIONS

- 1-The warranty period starts from the invoice date and warranted against manufacturing defects for 3 years.
- 2-Devices and apparatuses should only be used with Dizayn Boiler. Otherwise, they are out of warranty.
- 3-Devices and apparatus are delivered to the customer in working condition in our company. On-site commissioning is subject to a service fee.
- 4-The repair of the devices and apparatus covered by the warranty is carried out in our company factory and should send by contracted transportation company. In on-site services, the transportation and accommodation expenses of the service personnel belong to the customer. The shift fee during transportation is added to the service fee and collected in advance.

⑤

5-The maintenance of devices and apparatus is done in our company. For the maintenance of the devices and apparatus, the round travel fares belongs to the customer.

6-In case of malfunctioning of the devices and apparatus whose warranty period continues, it is tested in our company whether the malfunction is caused by a customer or manufacturer fault, and it is reported with a report issued by our company.

7-In case of detection of manufacturer-induced errors of devices and apparatus whose warranty period continues, the customer can request a replacement or repair of the devices and apparatus at full expense by the manufacturer, unless it's higher than the product's price.

8-In the event that the faults of the devices and apparatus whose warranty period continues are determined as caused by the customer, all expenses would be belong to the customer.

9-Customers should be aware of damages (if there is any) of product and warn manufacturer since the day warranty duration starts. If customer do not warn manufacturer with knowledge of damage, customer lose the rights of article 6.

10-Malfunctons resulting from the use of devices and apparatus contrary to the matters stated in the User Manual are not covered by the warranty.

11-Devices and their apparatus are out of warranty if they are beaten, broken or scratched by the customer.

12-Damages resulting from the use of devices and apparatus belonging to other brands and models without the approval of the manufacturer are not covered by the warranty.

13-Battery leakage and errors due to rust, oxidation and liquid contact by working in acidic / humid environments are not covered by the warranty.

14-When the product is not used for a long period (more than 15 days), remove the batteries. Otherwise, malfunctions that will occur are out of warranty.

15-Damages that may occur during the transportation of devices and apparatus are not covered by the warranty. Customers can take a transportation insurance.

16-Damages caused by mains voltage / faulty electrical installation are not covered by the warranty

17-Devices and apparatuses are out of warranty for malfunctions caused by force majeure such as fire, flood, earthquake etc.

18-All of the devices and apparatuses, including all their parts, are under the warranty of our company.

19-In case of malfunction of the devices and apparatuses within the warranty period, the time spent during repairment period is added to the warranty period. The repair period of the product cannot exceed 20 working days. This period starts from the date of notification to the service station of the malfunction related to the product or, in the absence of a service station, to the seller, dealer, agency, representative, importer or manufacturer of the product. Consumer can report the problem by; phone, fax, e-mail, registered and reply paid letter or a similar way. However, in case of a conflict, responsibility of prove is belong to the customer. If the malfunction of the product is not repaired within 20 working days, the manufacturer-producer or importer; has to allocate another product with similar features to the use of the consumer until the repair of the product is completed.

20-Although the consumer uses his/her repair rights,
-If the product breaks down for 4 times in a year or 6 times in warranty duration and these problems effects main purpose of the product. (starting from delivery time during warranty.)

-Exceeding the maximum time required for repair,
- In the event that the service station is not available, if it is determined that the repair of the defect is not possible with the report prepared (in order) by one of the seller, dealer, agency, representative, importer or manufacturer, a refund or a price discount at the rate of defect can be requested.

21-The customer can make complaints and appeals to consumer courts or consumer arbitration committees.

22-The warranty document must be kept by the customer during the warranty period. If the document is lost, a second document will not be issued. In case of loss, repair and replacement of devices and apparatus will be made for a fee.

⑥

Vendor
Title: _____
Address: _____
Tel: _____ Fax: _____
E-Mail: _____ Invoice Date and Number: _____
Delivery Time and Place: _____
Authorized Signature: _____
Company Stamp: _____

Product
Type: Digital Room Thermostat
Brand: Dizayn
Model: HT150 SET

STAMP

Dizayn Grup reserves the rights of changing product specifications and user manuals.

*For all changes, you may visit dizaynkombi.com

⑦