

# doru

kW

20/24/28/35



Premix Full Condensing Combi

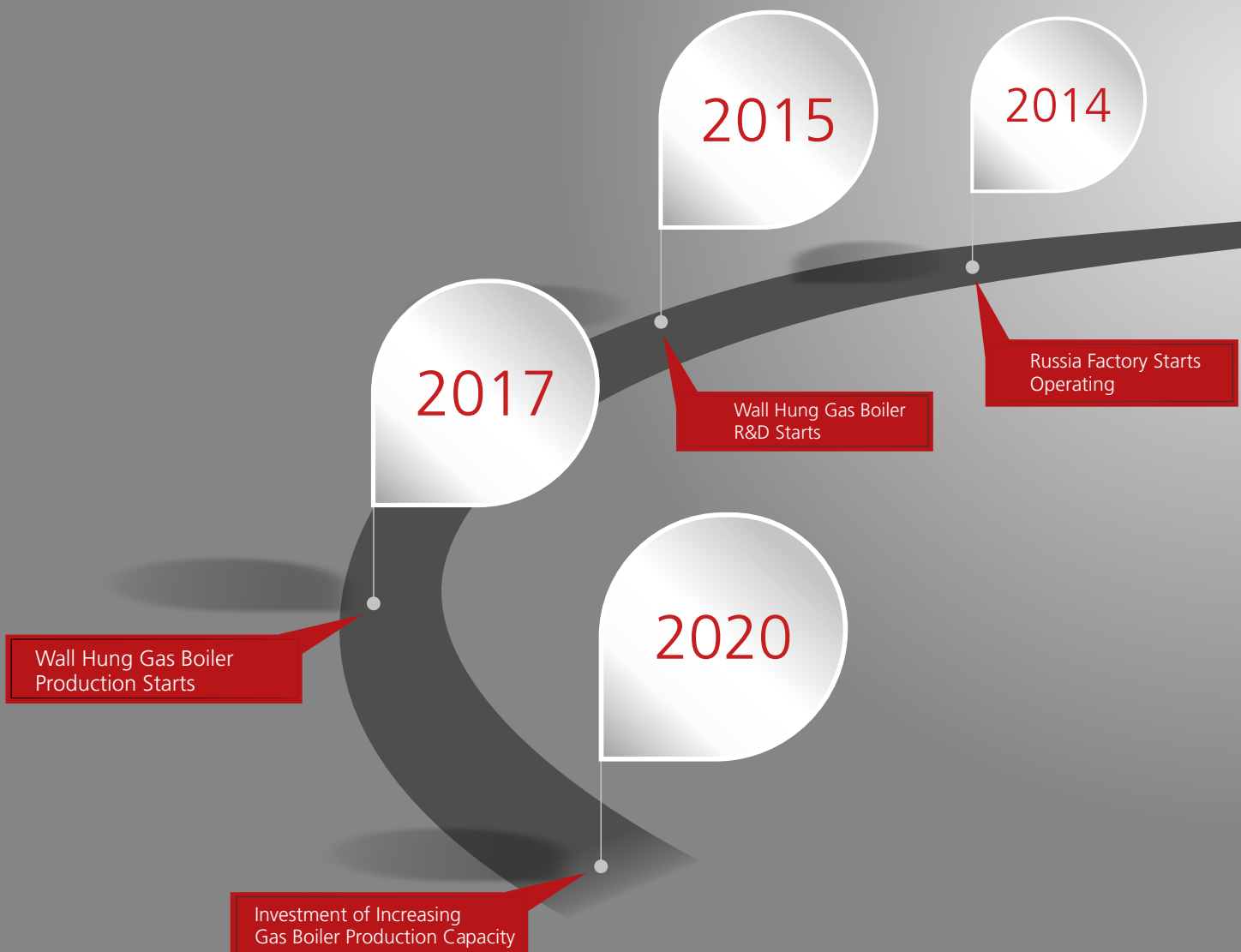
**DIZAYN** | **KOMBI**

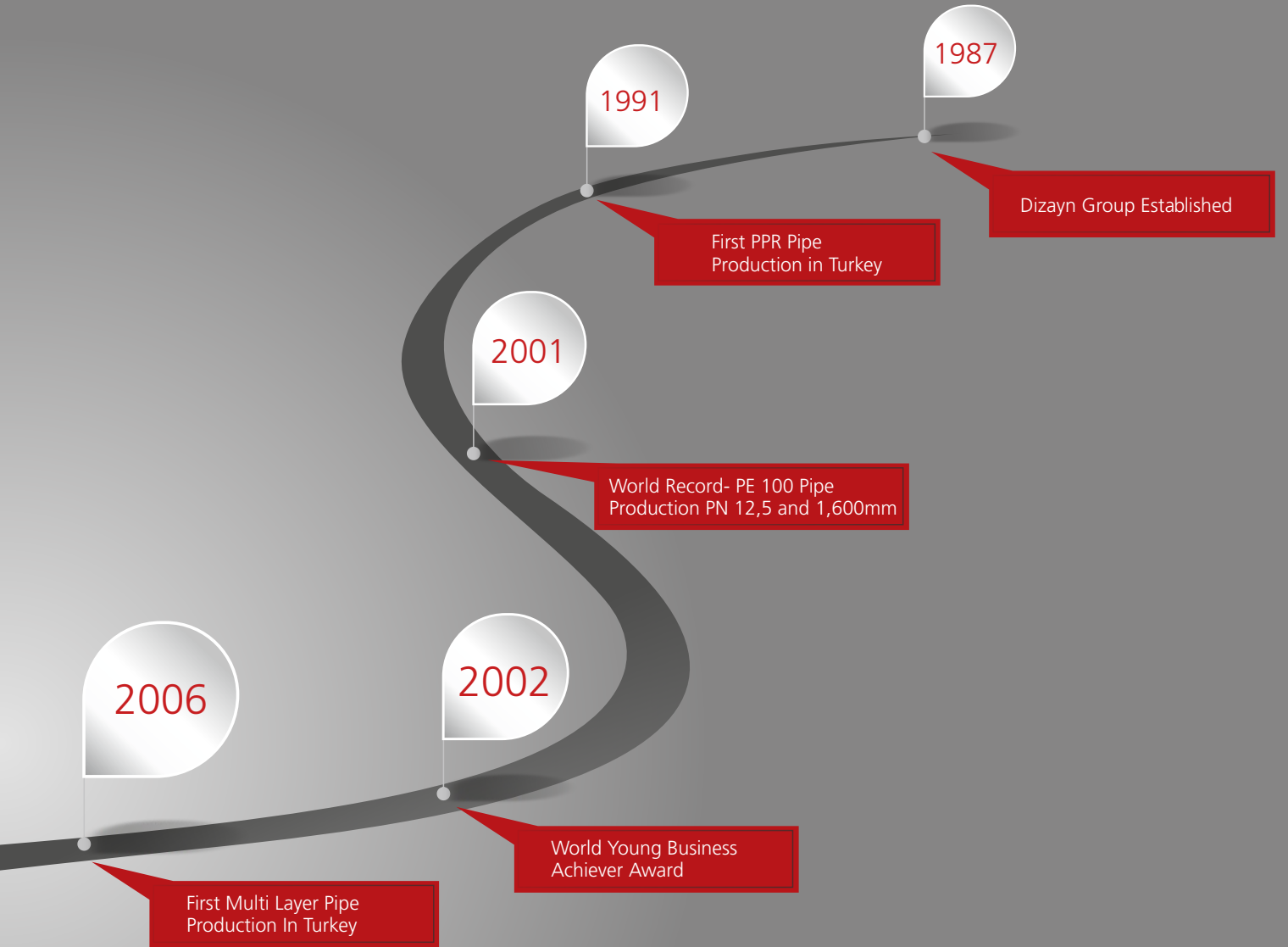
# ABOUT US

In 1988, Dizayn Group produced the first oxygen barrier floor heating pipes in Turkey which continued to innovate in central heating with many products such as Medium Layer Foiled Pipes, High-Tech Metal Fittings and Plastic Ball Valves, Elite Pipe. With the introducing of Dizayn Kombi to the market in 2015, Dizayn Group brought reliable and practical solutions which played a complementary role in the heating system.

As a family established 35 years ago with 100% native capital, we have been one of the industry's pioneers with our boiler production facility in Istanbul which has a capacity of creating more than 100.000 units. Currently exporting to more than 80 countries, our company provides fast and reliable service with its widespread service network. As the first manufacturer of Gas Adaptive boiler in Turkey, Dizayn Kombi offers newest technology to the buyers through its R&D support and brand power.

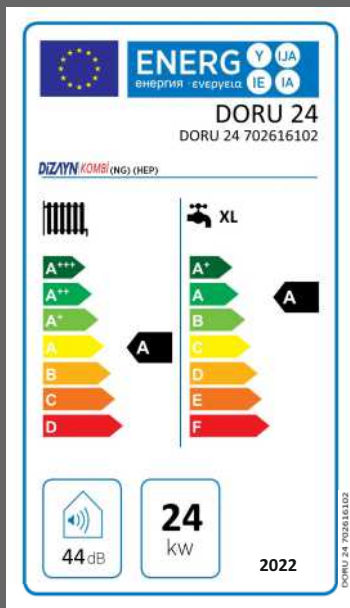
With the vision of becoming a solution partner on a global scale, Dizayn Kombi made boiler and plastic investments in the state of Mecklenburg-Vorpommern in Germany. Getting closer to the its goal of being one of the main players in HVAC industry at a global level, Dizayn Kombi will present its new products to the market as well as continue to serve its customers confidently.





- 1 **High Water Pressure Relief (3 Bar)**  
Protects the radiator heating circuit and device against possible increase in pressure.
- 2 **Low Water Pressure Relief (0,5 Bar)**  
Prevents the device operation in low water pressure.
- 3 **Automatic By-Pass System**  
Ensures water circulation in the device to prevent heat build-up.
- 4 **Expansion Tank (7 L)**  
Compensates for the expansion of the hot water in the heating circuit.
- 5 **EMC Filter**  
The filtration system that provides electromagnetic compatibility.
- 6 **Ionization Electrode**  
Checks for the presence of flame in burner.
- 7 **Pump Anti-Blockage System**  
Prevents blocking of the pump by running it in every 24 hours as long as there is electrical connection.
- 8 **3 Way Valve Anti-Blockage System**  
Prevents blocking by running the 3 way valve in every 24 hours as long as there is electrical connection.
- 9 **Anti-Freezing System**  
In the case of electricity and gas supply is available, Anti-Freezing System activates the device automatically when mains water temperature is below 5° C.
- 10 **Automatic Air Vent**  
Ensures automatic expulsion of the air in the heating installation.
- 11 **Safety Valve**  
Provides protection against overpressure in the heating installation.
- 12 **Overheating Safety Thermostat (90° C)**  
Stops the device operation if heating water temperature exceeds safety level.
- 13 **Flue Safety System**  
It provides safety by shutting down the system in case of high temperature in the flue.
- 14 **Condensate Trap**  
It provides safety of the environment by blocking the waste gas escape from the condensate water outler.

# doru



Has Class A high efficiency and complies with the ErP regulations of the European Union.



**kw**  
20/24  
28/35



### Higher Efficiency and Longer Life with the Specially Designed Exchanger

Offering high efficiency with its weldless one-piece, extensive surface area, patented design, the stainless steel heat exchanger also has a longer life span.



### Connecting to Room Thermostats Through the Open-Term Protocol

Maximizes efficiency by easily connecting to room thermostats with its main board which is compatible with the newest technology Open-Term Protocol.



### Minimum Electricity Usage with ErP-Compatible Circulation Pump

Provides low electricity usage and higher efficiency with its ErP (Energy-related products) compatible circulation pump.



### User-Friendly Design with Ergonomic Style and 30 o Large LCD Screen

Allows easy tracking through the illuminated large LCD screen and reaches all temperature and service parameter settings of the Doru boiler.



### Can Be Used in Narrow Spaces

As one of the smallest boilers in the world, Doru can fit into the narrowest spaces and be a part of your home.



### Appropriate for all Houses with its Wide Range Options

Suitable for every house, Doru is budget-friendly with its 20kw, 24 kw, 28 kw, 35kw capacity options.



**24** Service on your Doorstep in 24 hours

We are only a call away from you with our more than 200 authorized specialist services!



Scan For Our Services



Domestic Water Temperature Setting

Radiator Temperature Setting

Mood Change Button

Reset Button



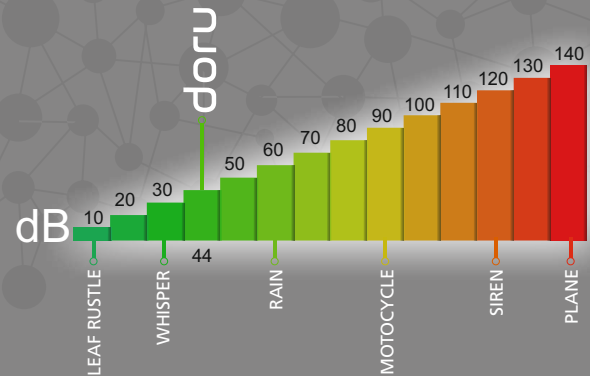
### Wide Modulation Range, Maximum Savings

With its special gas valve, it provides a modulation range of 1/7. It enhances efficiency according to the needs, reduces carbon emissions and saves gas and electricity.



### Extremely Quiet

Operates in 44dB thanks to its exclusively designed silencer and top level technology sound isolation materials in its safe.



# The Warmth of Your House is on Your Hands

You can now easily warm up more efficiently and comfortably through Dizayn Room Thermostats which function fully integrated with Dizayn Gas Boilers (for both Condensing and Conventional) as well as make precise arrangements up to 0.1°C on the large LCD screen.

- Wireless Connection
- Large LCD Screen
- Easy Usage
- Precise Temperature Measurements
- Heat Calibration Control



**Exclusively Designed Stainless Steel Heat Exchanger**

Weldless, one-piece, extensive heating surface area, patented design, stainless steel Dizayn Kombi exchanger.

**Premix Burner Group**

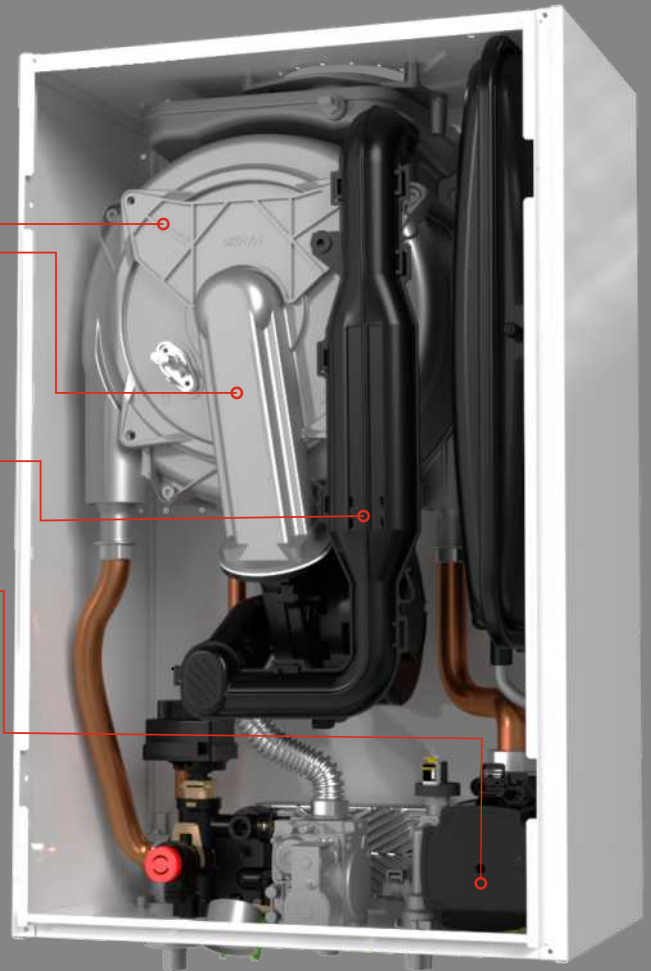
The system works in an integrated manner as well as provides high efficiency combustion thanks to the burner designed in accordance with the premix technology.

**Advanced Silencer**

Ensures silence with its specially-designed silencer.

**Circulation Pump with Modulation**

Guarantees low electricity usage with its ErP compatible modulation pump.



- Can function with both natural gas and LPG.



**Service – Friendly Design**

As a product of many R&D works, Doru boilers are specially designed to offer easy access to services with its one-piece front panel.

| Technical Specifications            | Unit | DORU 20 | DORU 24 | DORU 28 | DORU 35 |
|-------------------------------------|------|---------|---------|---------|---------|
| <b>Plumbing System</b>              |      |         |         |         |         |
| Maximum thermal power               | kW   | 20,1    | 25,1    | 28,2    | 33,8    |
| Minimum thermal power               | kW   | 4,1     | 4,1     | 4,2     | 4,4     |
| Maximum thermal load (80/60)        | kW   | 19,8    | 24,8    | 27,8    | 33,4    |
| Minimum thermal load (80/60)        | kW   | 4,1     | 4,1     | 4,2     | 4,4     |
| Maximum thermal load (50/30)        | kW   | 18,7    | 23,4    | 26,2    | 31,4    |
| Minimum thermal load (50/30)        | kW   | 3,8     | 3,9     | 4       | 4,1     |
| Energy classes (ErP Lot1, EN 15502) |      | A/A     | A/A     | A/A     | A/A     |
| Yield (50/30 °C partial) BED 92/42  | %    | 107,1 % | 107,1 % | 107,1 % | 107,1 % |
| Yield (50/30 °C max) BED 92/42      | %    | 107,5 % | 107,3 % | 107,6 % | 107,6 % |
| Yield (50/30 °C min) BED 92/42      | %    | 107,9 % | 105,1 % | 105,0 % | 107,3 % |
| Gas consumption (50/30°C min) max   | m³/h | 1,9     | 2,5     | 2,9     | 3,4     |
| Gas consumption (50/30°C min) min   | m³/h | 0,39    | 0,41    | 0,43    | 0,44    |
| Temperature setting                 | °C   | 30-80   | 30-80   | 30-80   | 30-80   |
| Maximum system pressure             | bar  | 3       | 3       | 3       | 3       |
| Minimum working pressure            | bar  | 0,8     | 0,8     | 0,8     | 0,8     |
| Gas inlet pressure                  | mbar | 20-37   | 20-37   | 20-37   | 20-37   |
| Expansion tank capacity             | lt   | 8       | 8       | 8       | 8       |
| NOx class ( EN 15502 )              |      | 6       | 6       | 6       | 6       |
| Pump type                           |      | 15/60   | 15/60   | 15/60   | 15/60   |
| Gas category                        |      | 112H3+  | 112H3+  | 112H3+  | 112H3+  |

| Technical Specifications                            | Unit   | DORU 20     | DORU 24     | DORU 28     | DORU 35     |
|-----------------------------------------------------|--------|-------------|-------------|-------------|-------------|
| <b>Use water features</b>                           |        |             |             |             |             |
| Maximum thermal power                               | kW     | 24          | 29,0        | 31          | 35,0        |
| Specific water flow rate ( dT= 30°C)                | Lt/min | 9,9         | 12,1        | 13,5        | 16,7        |
| Minimum flow rate                                   | Lt     | 2           | 2           | 2           | 2           |
| Operating temperature range                         | °C     | 30-60       | 30-60       | 30-60       | 30-60       |
| Minimum water pressure                              | bar    | 0,5         | 0,5         | 0,5         | 0,5         |
| Maximum water pressure                              | bar    | 8           | 8           | 8           | 8           |
| <b>Electrical Characteristics</b>                   |        |             |             |             |             |
| Voltage                                             | v      | 230 V 50Hz  | 230 V 50Hz  | 230 V 50Hz  | 230 V 50Hz  |
| IP class                                            |        | X4D         | X4D         | X4D         | X4D         |
| Power                                               | w      | 120         | 120         | 120         | 120         |
| <b>Chimney System</b>                               |        |             |             |             |             |
| Average flue temperature (30/50)                    | °C     | 51          | 52          | 53          | 55          |
| Maximum vertical chimney length                     | m      | 20          | 20          | 20          | 20          |
| CO2 limit G20 Max                                   | %      | 9,1         | 9,1         | 9,1         | 9,1         |
| CO2 limit G20 Min                                   | %      | 8,7         | 8,7         | 8,7         | 8,7         |
| CO2 limit G37 Max                                   | %      | 10,3        | 10,3        | 10,3        | 10,3        |
| CO2 limit G37 Min                                   | %      | 9,5         | 9,5         | 9,5         | 9,5         |
| Maximum horizontal chimney lengths coaxial (60/100) | m      | 6           | 6           | 6           | 6           |
| Maximum vertical chimney lengths coaxial (80/125 )  | m      | 20          | 20          | 20          | 20          |
| Maximum vertical chimney lengths coaxial (60/100 )  | m      | 10          | 10          | 10          | 10          |
| <b>Dimensions</b>                                   |        |             |             |             |             |
| Sizes (Height*Width*Depth)                          | mm     | 650x412x277 | 650x412x277 | 650x412x277 | 650x412x277 |
| Weight                                              | kg     | 29          | 30          | 31          | 32          |

# doru



# **DIZAYN** | **KOMBİ**

Atatürk Mah. Adnan Menderes Cad.No:6  
34522 Esenyurt / İSTANBUL  
Tel: +90 (212) 886 57 41 - www.dizaynkombi.com

✉ info@dizaynkombi.com

dizaynkombi.com | [f](#) [t](#) [i](#) / dizaynkombi